

Designed, manufactured and tested in the Mi-T-M tradition of quality, this heavy-duty belt drive series is the most popular choice for single- and dual-axle trailer-mount options.

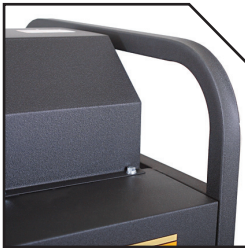
STATIONARY/SKID-MOUNT -
GASOLINE/DIESEL - BELT DRIVE

HOT WATER PRESSURE WASHERS
HS Series

2900-watt generator delivers clean power to the burner



Heavy-duty powder coated 1½-inch steel square tube frame



HS-3505-OMGH

Pump: Belt drive triplex piston General or AR pump with ceramic plungers · Factory preset unloader · Forged brass manifold · 80-mesh, high volume, stainless-steel screen inlet water strainer

Engine: Industrial gasoline or diesel engines with electric start (battery included)

Components: Pressure relief valve protects against excessive system pressure · No. 1 or No. 2 diesel or kerosene fired burner (Bio-fuel not approved at this time) · Polyethylene burner and engine fuel tanks · ½-inch schedule 80-coil with stainless-steel wrap · Heavy-duty dual cogged belt drive system · High quality fuel filter/water separator ensures clean fuel supply

Unit Includes: Quick connect nozzles (0°, 15°, 25° and 40°) · 50-foot x ¾-inch steel wire-braided pressure hose with quick connects, swivel and bend restrictors · Professional-grade insulated trigger gun with safety lock-off · Adjustable pressure insulated dual lance with safety lock-off

Miscellaneous: Temperature rise 150°F/66°C above ambient, maximum outlet temperature is 200°F

2 YEAR LIMITED PARTS & LABOR WARRANTY
2 YEAR LIMITED VANGUARD ENGINE WARRANTY
3 YEAR LIMITED HONDA ENGINE WARRANTY
3 YEAR LIMITED COIL WARRANTY
3 YEAR LIMITED KUBOTA ENGINE WARRANTY
7 YEAR LIMITED PUMP WARRANTY

CSA US CERTIFIED

Model No.	PSI	GPM	Displacement/ HP/Engine	Fuel Tank Cap.	Burner Fuel Tank Cap.	Burner Fuel Cons.	Dimensions (LxWxH)	Ship Wt.	Net Wt.
HS-3005-OMGV	3000	4.8	480cc Vanguard OHV	10.0 gallon	10.0 gallon	3.37 gph	50in.x34in.x46in.	816 lbs.	710 lbs.
HS-3006-OMDK [^]	3000	5.6	15.5 HP Kubota	10.0 gallon	10.0 gallon	3.37 gph	56.5in.x34in.x46in.	940 lbs.	836 lbs.
HS-3008-OMGH	3000	7.8	670cc Honda OHV	10.0 gallon	10.0 gallon	3.67 gph	50in.x34in.x46in.	854 lbs.	750 lbs.
HS-3505-OMDK [^]	3500	4.7	15.5 HP Kubota	10.0 gallon	10.0 gallon	3.37 gph	56.5in.x34in.x46in.	940 lbs.	836 lbs.
HS-3505-OMGH [#]	3500	4.7	614cc Honda OHV	10.0 gallon	10.0 gallon	3.37 gph	50in.x34in.x46in.	854 lbs.	750 lbs.
HS-3506-OMGH	3500	5.6	670cc Honda OHV	10.0 gallon	10.0 gallon	3.37 gph	50in.x34in.x46in.	864 lbs.	760 lbs.
HS-4004-OMAH ^{#+}	4000	4.0	614cc Honda OHV	10.0 gallon	10.0 gallon	3.37 gph	50in.x34in.x46in.	854 lbs.	750 lbs.
HS-4005-OMDK ^{^+}	4000	4.5	15.5 HP Kubota	10.0 gallon	10.0 gallon	3.37 gph	56.5in.x34in.x46in.	940 lbs.	836 lbs.

[^]Diesel unit.

[#]Model equipped with AR pump, all other models equipped with General pumps.

⁺Model equipped with trapping unloader, all other models equipped with K7 flow actuated unloader.

Options (Consult price list or www.mitm.com for more information on option descriptions and qualifying models)

20-1070A18	Removable painted front panel	HX-0144, HX-0202	Dual gun (requires trapping unloader)
HX-0130	Three-way ball valve	HX-0145	Adjustable temperature control
HX-0131	High pressure detergent injection (K7)	HX-0146	Hour meter
HX-0133, HX-0135 & HX-0136	Steam combination 250°F (K7)	HX-0147	Four (4) point lifting capability
HX-0138 - HX-0142	Steam combination 250°F (requires trapping unloader)	HX-0148	Detergent (requires trapping unloader)
HX-0143, HX-0200	Trapping unloader	AW-5740-0000	Wheel kit

Note: To order options HX-0138 to HX-0142, HX-0144, HX-0148 or HX-0202 you must order option HX-0143 or HX-0200 (not required for 4000-PSI models, which already come equipped with trapping unloader).